

MONUMENTAL ENERGY

PRODUCING OIL & GAS IN NEW ZEALAND'S PROLIFIC ONSHORE TARANAKI BASIN

April 2026

TSX-V: MNRG | FSE : ZA6 | OTCQB : MNMRF

Forward Looking Statements

**Forward Looking
Statements**

[About](#)

[Project](#)

[Investment](#)

[Summary](#)

[Contact us](#)

This presentation contains certain forward-looking statements and forward-looking information (collectively referred to herein as “forward looking statements”) within the meaning of applicable securities laws. All statements other than statements of present or historical fact are forward looking statements. Forward looking statements are often, but not always, identified by the use of words such as “could”, “should”, “can”, “anticipate”, “expect”, “believe”, “will”, “may”, “projected”, “sustain”, “continues”, “strategy”, “potential”, “projects”, “grow”, “take advantage”, “estimate”, “well positioned” or similar words suggesting future outcomes. In particular, this presentation contains forward looking statements relating to Monumental Energy Corp.’s (“Monumental Energy” or the “Company”) plans for its properties/projects, other statements relating to the technical, financial and business prospects of the Company, completing additional work on the projects, timelines, expectations and outcomes from New Zealand Energy Corp., completion of the option terms to acquire the projects, the Company’s mission statement, future opportunities, business strategies and objectives and management plans, competitive advantages, exploration activities, development and production plans, the expected financial performance of Monumental Energy.

The forward looking statements regarding the Company are based on certain key expectations and assumptions of the Company concerning anticipated financial performance, business prospects, strategies, tax laws, commodity prices, the sufficiency of budgeted capital expenditures in carrying out planned activities, the availability and cost of labour and services and the ability to obtain financing on acceptable terms, all of which are subject to change based on market conditions and potential timing delays. While such estimates and assumptions are considered reasonable by the management of the Company, they are inherently subject to significant business, economic, competitive and regulatory uncertainties and risks.

Such forward-looking information reflects the Company’s views with respect to future events and is subject to risks, uncertainties and assumptions, including the risks and uncertainties relating to the interpretation of exploration results, risks related to the inherent uncertainty of exploration and cost estimates and the potential for unexpected costs and expenses, and those other risks filed under the Company’s profile on SEDAR at www.sedarplus.ca.

By their very nature, forward looking statements involve inherent risks and uncertainties (both general and specific) and risks that forward looking statements will not be achieved. Undue reliance should not be placed on forward looking statements, as a number of important factors could cause the actual results to differ materially from the beliefs, plans, objectives, expectations and anticipations, estimates and intentions expressed in the forward looking statements, including among other things: volatility in the market prices for oil and gas; commodity prices (including lithium and cesium); liabilities and risks, including environmental liabilities and risks, inherent in oil and gas operations; general economic and market factors, including business competition, changes in government regulations or in tax laws; general political and social uncertainties; lack of insurance or insufficient insurance coverage; delay or failure to receive board or regulatory approvals; changes in legislation, including environmental legislation, affecting the Company; timing and availability of external financing on acceptable terms; loss of key individuals; continued availability of capital and financing and general economic, market or business conditions; failure to secure personnel and equipment for work programs, adverse weather and climate conditions; risks relating to unanticipated operational difficulties (including failure of equipment or processes to operate in accordance with specifications or expectations, cost escalation, unavailability of materials and equipment, government action or delays in the receipt of government approvals, industrial disturbances or other job action, and unanticipated events related to health, safety and environmental matters); risks relating to inaccurate geological assumptions, failure to maintain or obtain all necessary government permits, approvals and authorizations; failure to obtain or maintain surface access agreements or understandings from local communities, land owners or Indigenous groups; fluctuation in exchange rates; the impact of viruses and diseases on the Company’s ability to operate, capital market conditions, restriction on labour and international travel and supply chains; the ability to manage working capital; decrease in the price of lithium, cesium and other metals; decrease in the price of oil and gas; loss of key employees, consultants, or directors, failure to maintain or obtain community acceptance (including from the Indigenous communities), increase in costs, litigation, and failure of counterparties to perform their contractual obligations.

Readers are cautioned that the foregoing list is not exhaustive.

The forward-looking statements contained herein are expressly qualified in their entirety by this cautionary statement. The forward-looking statements included in this presentation are made as of the date hereof and the Company does not undertake and is not obligated to publicly update such forward-looking statements to reflect new information, subsequent events or otherwise unless so required by applicable securities laws.

The scientific and technical information contained in this presentation has been reviewed and approved by Kris Raffle, P.Geol., a Director of the Company and a Qualified Person as defined by National Instrument 43-101 – Standards of Disclosure for Mineral Projects.

Market & Industry Data

This presentation includes market and industry data obtained from various publicly available sources and other sources believed by the Company to be true. Although the Company believes it to be reliable, the Company has not independently verified any of the data from third party sources referred to in this presentation or analyzed or verified the underlying reports relied upon or referred to by such sources, or ascertained the underlying assumptions relied upon by such sources. The Company does not make any representation as to the accuracy of such information.

Prospective Investors Should Consult with their Advisors.

The information contained in this presentation does not purport to be all-inclusive or to contain all information that a prospective investor may require. Prospective investors are encouraged to conduct their own analysis and reviews of the Company and of the information contained in this presentation. Without limitation, prospective investors should consider the advice of their financial, legal, accounting, tax and other advisors and such other factors they consider appropriate in investigating and analyzing the Company.

Oil and Gas Activities Advisories

Any references in this presentation to potential, initial, early and/or test or production/performance rates may be useful in confirming the presence of hydrocarbons, however, such rates are not determinate of the rates at which any wells acquired or owned by the Company (or NZEC (as defined herein)) may produce or continue production and to decline thereafter. Additionally, such rates, if indicative of actual production, may also include recovered “load oil” fluid used in well completion stimulation. Readers are cautioned not to place reliance on such rates in calculating the aggregate production for NZEC. The initial production rate may be estimated based on other third-party estimates or limited data available at this time. In all cases in this presentation, potential production, initial production or tests are not necessarily indicative of long-term performance of the relevant well or fields or of ultimate recovery of hydrocarbons.

M Directors & Management Team



Maximilian Sali
CEO, Director & Founder

Maximilian Sali is a capital markets executive and entrepreneur with over 15 years of experience in investing, corporate development, and M&A. He is president of Baccarat Investments Inc. and Founder of Monumental Energy Corp. Mr. Sali was a founding shareholder of Advantage Lithium, acquired by Allkem for \$69 million in 2020, and the founder and former CEO of Defense Metals Corp.



Ryan Cheung
CFO & Director

Ryan Cheung, CPA, CA, provides accounting, management, securities regulatory compliance services to private and public-listed companies. Mr. Cheung also serves as an officer and/or director of a number of public-listed companies. Mr. Cheung holds a Bachelor of Commerce degree from the University of Victoria and is a member of the Chartered Professional Accountants of British Columbia.



Bill Treuren
Lead Technical Director

Bill Treuren brings more than 30 years of experience in the oil and gas industry, with a deep and diverse background across all key operational areas. Bill has held senior engineering and project management roles with major upstream and midstream companies, where he was instrumental in the design, construction, and optimization of critical infrastructure. His proven ability to navigate challenging technical environments and regulatory frameworks makes him an invaluable resource for advancing operational excellence.



Kris Raffle
QP & Director

Kristopher Raffle serves as the Qualified Person for the Company. Mr. Raffle is also a Partner and Principal Geologist with geologic consulting firm APEX Geoscience Ltd. Mr. Raffle has over 20 years' precious, base and rare metals exploration experience.



Michelle DeCecco
Director

Michelle DeCecco is the CEO of Kairos Gold and COO of Lithium Chile, bringing over 20 years of experience in the public markets. Her expertise spans corporate development, capital markets, investor relations, and strategic partnerships. She has led the development and execution of corporate strategy, including acquisitions, joint ventures, and partnerships, with a strong emphasis on shareholder engagement. Ms. DeCecco holds a Master of Business Administration.



[About](#)

[Project](#)

[Investment](#)

[Summary](#)

[Contact us](#)

Following a strong
start to 2026
The Taranaki Basin,
NZ continues to
deliver



The New Zealand Oil & Gas Play

IN PARTNERSHIP WITH NEW ZEALAND ENERGY CORP. (TSXV: NZ)

- Expanding portfolio to include long-term royalty with oil and gas infrastructure to support stable cash flow and shareholder returns.
- 25% Royalty Agreement on multiple wells within the Taranaki basin. Currently **4** wells are in production.
- Funding agreement in place on multiple onshore wells with L&M Energy
- Natural Gas Investment with potential near-term production, revenue & dividend strategy.
- Gas storage project currently being evaluated by Transfield Worley



The Waihapa production station





Ngaere-1

- ≡ Delivered **flush production of 3,000 barrels** and is currently producing at an unstimulated flow rate of 120 BOPD.
- ≡ Perforations targeted a bypassed pay zone in the the Mount Messenger Formation, located within 100M of surface
- ≡ Encountered 30 meters of pay in the Mount Messenger formation (same formation as the nearby Cheal field)
- ≡ 1KM away from the Waihapa Production Facility

Ngaere-2

- ≡ Ngaere-2 delivered **flush production of 3,000 barrels** and a current 300 BOPD unstimulated flow rate
- ≡ 36 Meters of pay in the Mount Messenger formation (same formation as the nearby Cheal field)
- ≡ 3KM North of Ngaere-1 but located within 4KM of the Waihapa Production Facility
- ≡ Ngaere-2 which was separated by a fault between Ngaere-1 & 3 discovered a new oil pool on the side of the fault



Waihapa H1

- ≡ Exceeded expectations with 568 BOPD stable, unstimulated production of 36-40° API oil
 - ≡ 3,000-barrel initial flush production following perforation program
 - ≡ Low-cost perforations were initiated across 7 intervals (6 meters each)
 - ≡ Rapid return to production with all 7 perforations successful and flowing
 - ≡ Within 100 meters of the Waihapa production facility with capacity currently being upgraded to 4000 Barrels.
-

SCALABILITY & UPSIDE

- ≡ Multiple additional recompletion targets identified across licenses
- ≡ Clear pathway to near-term production growth through similar workovers
- ≡ Expands inventory of low-cost, high-impact opportunities

STRATEGIC IMPORTANCE

- ≡ Validates repeatable, capital-efficient workover model across Taranaki Basin
- ≡ Demonstrates strong reservoir response without stimulation
- ≡ Immediate cash flow potential from low-risk redevelopment
- ≡ Supports growing production base alongside Ngaere wells



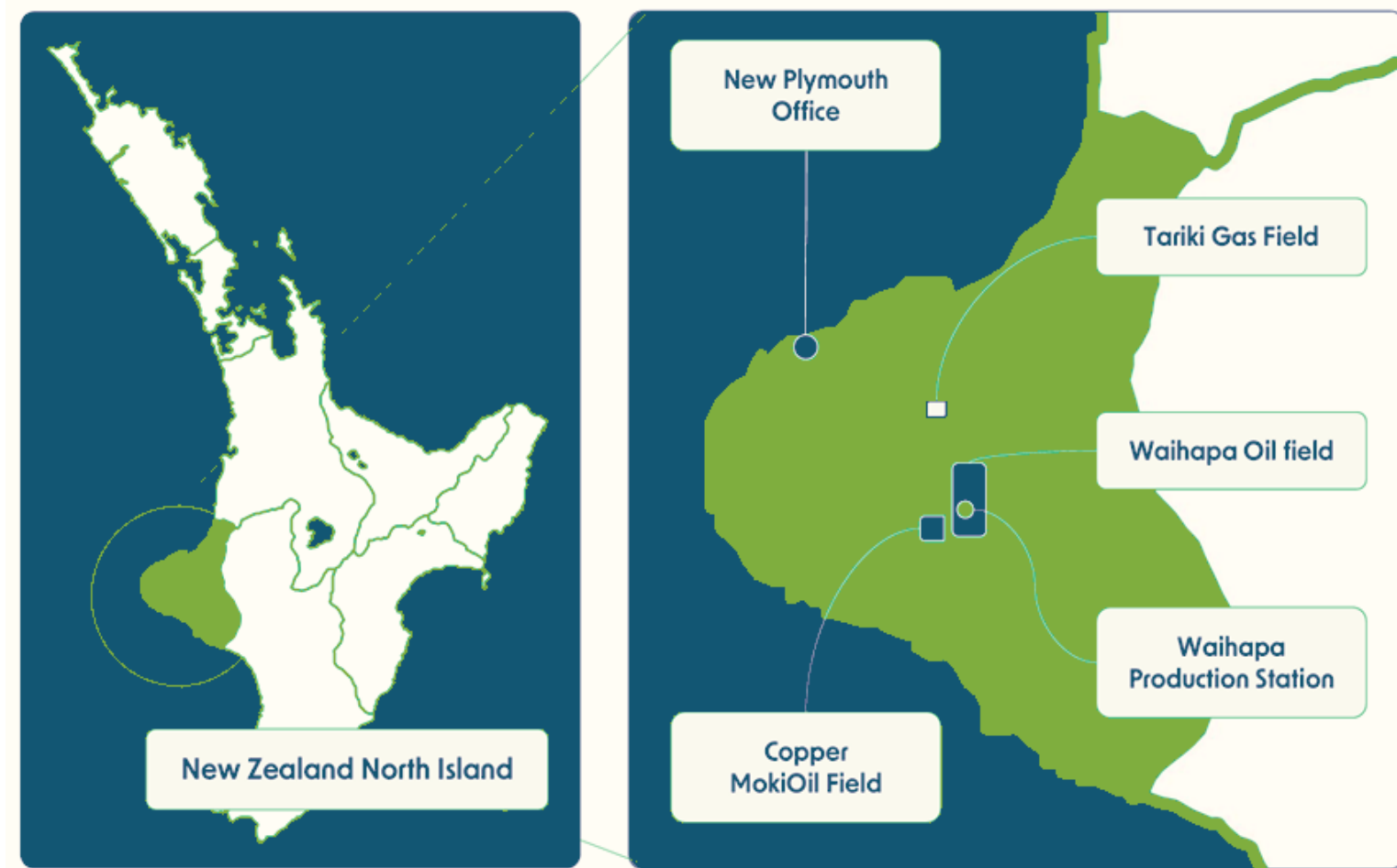
The Copper Moki 1 & 2 Oil and Gas Wells

- ≡ Assets with maintained infrastructure
- ≡ 3 KM gas line tied into the Waihapa Production facility
- ≡ Almost 1M barrels produced at Copper Moki before the wells were shut in due to mechanical issues. As of now;
- ≡ Copper Moki-2 – *Online*
- ≡ Copper Moki-1 – *Completed, however currently offline awaiting a new pump, which is scheduled to be back online by Mid May*

Copper Moki -1 & 2

*See New Zealand Energy Corp. news release dated November 1, 2022, “1P” means “proved reserves”, 2P” means “proved plus probable reserves”, “3P” means “proved plus probable plus possible reserves”

M Current Project Pipeline



Current and Near-Term Revenue Generating Projects

PROJECT	Project by completion	PRODUCTION	COST (MNRG)	STATUS	PAYBACK TERMS	TIMING
Moki 2	A	40 BOE/day	\$440k	Completed & Online	25% royalty after 75% cost recovery	Finished
Ngaere 1	B	120 BOE/day	\$100k	Completed & Online	25% royalty after 75% cost recovery	Finished
Waihapa H1	C	568 BOE/day	\$200k	Completed & Online	25% royalty after 75% cost recovery	Finished
Ngaere 2	D	300 BOE/day	\$100k	Completed & Online	25% royalty after 75% cost recovery	Finished
Ngaere 3	E	TBD	\$100k Est.	Awaiting Perforation	25% royalty after 75% cost recovery	H2 2026
Waihapa 4	F	TBD	TBD	Assessment	25% royalty after 75% cost recovery	H2 2026
Toko 2B	G	TBD	\$250k Est.	Stimulate Tikorangi Frac	25% royalty after 75% cost recovery	H2 2026

Value Proposition

- ≡ **Near-Term Production:** Multiple wells online in 2026 with low-cost, high-return workovers using perforation guns
- ≡ **Rapid Payback:** Brent Crude prices at multi-year highs with high flush production.
- ≡ **Strategic Partner:** L&M Energy as a well financed private Co. NZEC as operator
- ≡ **Scalable Growth:** Six additional workovers to come online by Q4 along with new applications, **Targeting 1200-1500 BOE/ D by year end**
- ≡ **Additional Projects:** Following Ngaere-3, Waihapa-4 and Toko 2B – Additional workovers are being evaluated to assess the quickest projects to come online



Blue Sky: Extended Exploration & Production Strategy

Strategic Goal:

Monumental is positioned to acquire undervalued assets through farm-ins, distressed sales, and open acreage, while leveraging the Waihapa/Ngaere infrastructure to accelerate revenue generation. Balanced portfolio: near-term cashflow – 50/50 JV structure

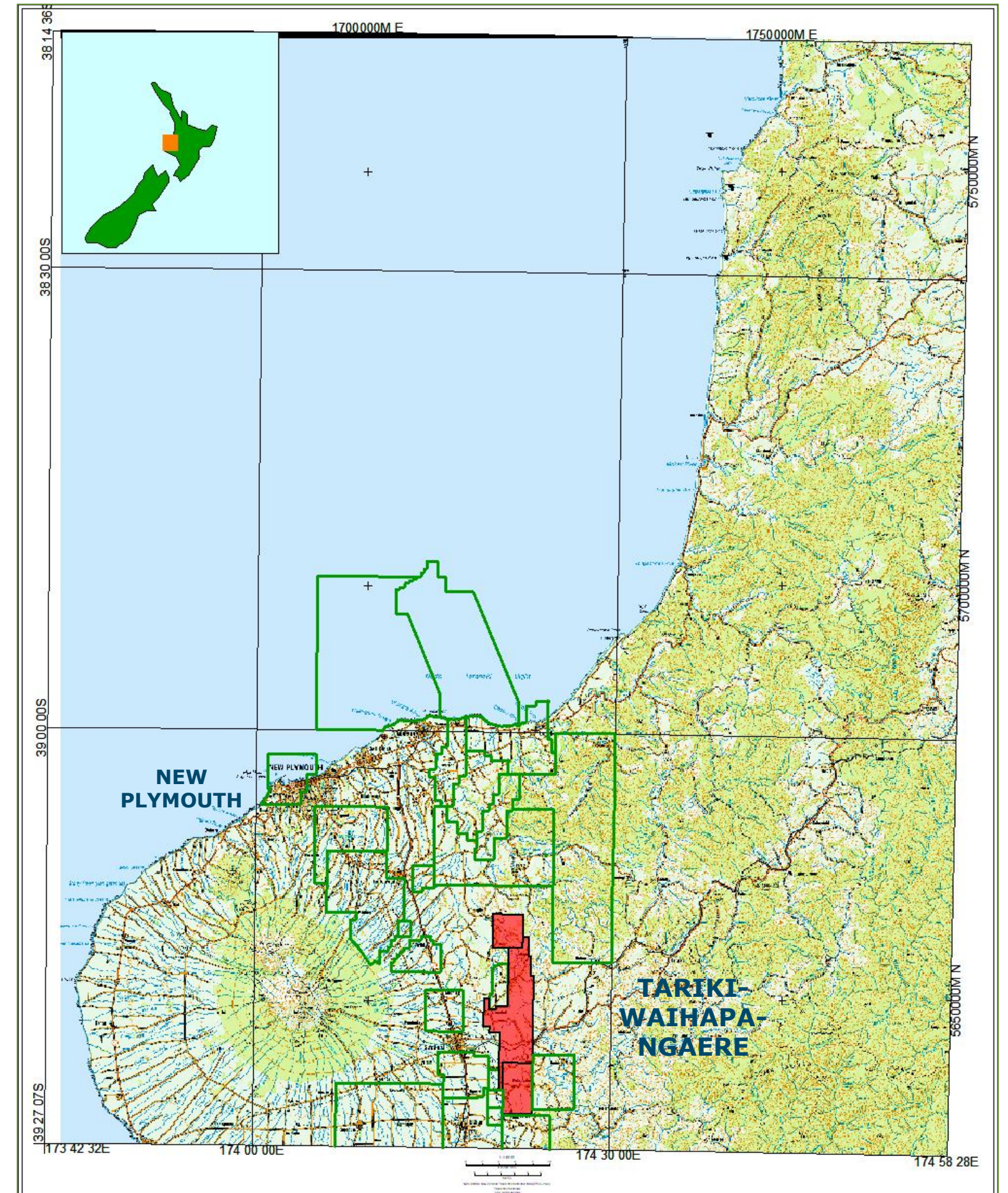
Near-Term: Brownfields (Low Risk – Cashflow)

- ≡ **Beaconsfield (PPL 38141):** Extend Ngaere permit to shallow prospects at proven production levels. Tie-in to Waihapa facilities. Near-term gas/oil production, 9-figure revenue potential, rapid payback.
- ≡ **Maata (PEP 60742):** Copper Moki-style prospect, larger scale. Deal in principle secured; pending Supreme Court decision. Significant oilfield development.
- ≡ **Kupe Gas Field:** Producing field with ~\$2B in reserves. Offset wells/new accumulation could double. Active acquisition discussions.



M Application Prospect:

- ≡ Application has been made over the application prospect is located onshore in the Northern Taranaki
- ≡ It is a Mangahewa Formation Sandstone play with a resource potential of **200 BCF & 12MMBO** (recoverable) ~2000m
- ≡ Deeper Taniwha Fm Cretaceous play-multi TCF potential
- ≡ The last exploration license over the area was in 2013 which intersected good quality water wet Mangahewa Fm sands beneath a basement overthrust complex which defines the eastern limit of the Taranaki Basin.
- ≡ Existing Maui gas pipeline lies 30km to the east providing a connection to market
- ≡ Bid made under the new NZPAM open market competitive process
- ≡ A bid is proposed consisting of an initial 6-year work program which would consist of G&G, 2D seismic acquisition and an exploration well
- ≡ Strong possibility that Methanex or Genesis Energy would take a gas offtake agreement and would participate on funding the work
- ≡ As to the NZ govt with their \$200M Gas Security Fund
- ≡ Indicative WP cost NZ\$20MM





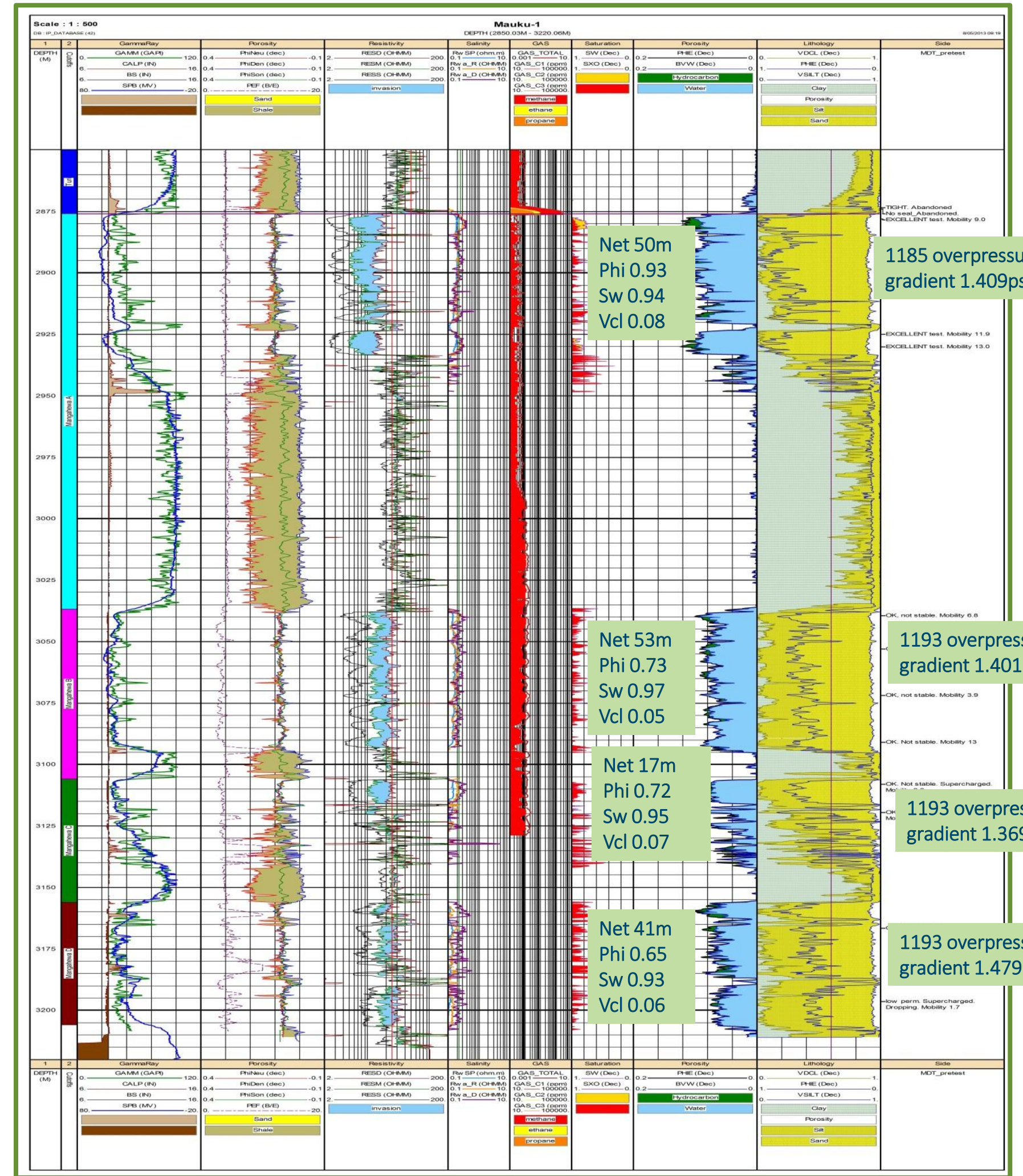
Composite Log Plot

MANGAHEWA FORMATION

- Exceptional reservoir thickness and pressure in the basin's primary deep gas play
- Mangahewa is the **main deep gas reservoir** in Taranaki
- Strong overpressure supports deliverability and recoverable volumes
- Reservoir quality supports modern completion designs
- Consistent overpressure gradients (1.37–1.48 psi/m) across multiple sand packages indicate a connected, basin-scale pressure system rather than isolated lenses.

RESERVOIR QUALITY SUMMARY:

- Net pay: 161 m (49% N/G)
- Porosity: ~7–9% (clean deep gas sands)
- Clay content: Very low (Vcl ~0.06)
- Pressure: Strongly over-pressured





The Infrastructure

The Waihapa Production Station and associated infrastructure includes (NZEC 50% interest):

- ≡ 45 mmcf/d gas processing, gas compression and LPG extraction facility (“TAWN facility”).
- ≡ 51-km 8-inch gas sales pipeline from the Waihapa Production Station to the Stratford Gas Power Generation Plant then terminating in New Plymouth.
- ≡ 59 km of oil/gas mixed product pipelines including gas lift lines;
- ≡ Oil storage for up to 8,000 barrels
- ≡ 49-km oil sales pipeline from the Waihapa Production Station to the Omata Tank Farm, capable of transporting up to 15,500 bbl/d.
- ≡ 18,000 bbl/d water disposal processing system; and
- ≡ 70 tonne/d liquid extraction capacity
- ≡ Facility and pipeline value est. \$100M (NZ)
- ≡ Tariki-5 well currently shut in pending velocity string installation

*See New Zealand Energy Corp news release November 7, 2023



Near Term Gas Production and Storage Project

- ≡ New Zealand receives \$10-15 USD per MCF of natural gas which is sold immediately to the local market, a massive premium to natural gas prices in North America. Lack of any new gas projects has left big energy concerns for the country and investment is significantly needed.
- ≡ NZ has a strategy to produce, sell and ship gas from its fully operational production facility and develop a future gas storage project using the Tariki –A5 well and reinjection methods.
- ≡ The New Zealand energy market is experiencing a significant supply shortage, driving elevated demand and record-high prices, with local gas producers currently operating at only 30% of potential capacity.

[About](#)

[Project](#)

[Investment](#)

[Summary](#)

[Contact us](#)





Government Announces Funding & Partnerships

May 2025

The newly elected governments resources Minister, Shane Jones, announced funds of \$200 million for Crown co-investment in new domestic gas field developments in the 2025 budget. The new initiative could see the Crown take a stake of up to 10-15% in new gas field developments, which acknowledges the scale and risk of bringing new supply online and will help to de-risk and catalyze new investment.



Investment Opportunity

- Monumental Energy currently owns 1M free trading shares.
- 30M \$NZ in tax losses to offset potential future production revenue.
- Fully permitted land package and operational facility.
- Near Brent crude pricing for oil and \$10 – 15 USD per MFC natural gas.
- Previous gas production of 50 Billion Square Cubic Feet (BSCF) with the potential to add between 17-20 BSCF (100% basis) with the Tariki-5 well in 2025.
- Current Gas Storage project being developed

RPS Evaluated Reserves and Value (Net to NZEC 50% basis)	1P	2P	3P
Condensate (STB)	51,900	136,900	205,900
Gas (BCF)	2.56	5.50	7.39
BOE (MMboe)	0.479	1.054	1.437
Before Tax NPV Million NZ\$			
-Undiscounted	20.1	50.2	71.9
-5%	18.3	43.1	58.1
-10%	16.6	37.4	48.4
-20%	13.7	29.2	35.9
Undiscounted After Tax NPV Million NZ\$	20.1	49.4	64.8

*See New Zealand Energy Corp. news release dated November 1, 2022, "1P" means "proved reserves", 2P" means "proved plus probable reserves", "3P" means "proved plus probable plus possible reserves"



The Tariki-5 gas well was drilled and tied into the production facility. The well is currently shut in pending a velocity string installation in November 2025.



Share Structure

78,620,361

Issued & Outstanding

23,815,126

Warrants @ .25, .30 and .65c

7,882,475

Stock Options - 694,600 @ \$0.20,
337,875 @ \$0.25, 2,400,000 @ \$0.10,
1,450,000 @ .13, 2,500,000 @ .05

\$ 233,000

Cash as of Dec 31, 2025

1,000,000 shares

Marketable Securities in NZEC

Significant Insider Holdings

4,100,000 | Maximilian Sali

CUSIP
61534M108

ISIN
CA61534M1086

Transfer agent
Computershare

Legal (CAD)
AFG LAW LLP

Legal (NZ)
JMD Willis LLP

MONUMENTAL
ENERGY





Contact Us

Maximilian Sali, Chief Executive Officer, Director and Founder

max@monumental.energy



604-367-8117

Vancouver Office

#228- 1122 Mainland

Vancouver, BC Canada V6Z 2E6

New Plymouth Office, NZ

#11 Young St. New Plymouth Central,

New Plymouth 4310, New Zealand

[monumental.energy](https://www.monumental.energy)